



Multiple Roller Doors

TYPES 10, 11 AND 12



INSTALLATION GUIDE

Complete the steps below while building the wall panels on the ground in conjunction with Figures 4–8 of the Gable Homeshed Framework Installation Guide. Roller door column flashings can be installed when the completed wall frames are standing.

Step One

Start by bolting the left, right and intermediate side roller door columns to the respective portal frame columns. Secure the header beams to the roller door columns using two header beam brackets per header beam. Use two plain 10x16mm self tapping screws in each flange of the header beam brackets. The bottom face of the header beams should measure 300mm from the top of the top girt (refer Figure 1 on page two) to allow a fixing point for the 300mm Superdek® header sheets.

Step Two

Position the roller door column flashings over the roller door columns and in corner applications over the ends of the gable end sheets. Fasten the roller door column flashings (corner, intermediate or wall depending on application) to your roller door columns using coloured 10x16mm self tapping screws at 600mm centres. Flashings that interfere with header beams will require notching as shown in Figure 1. Rivet the roller door header flashing into place on your header beam using 3.2mm rivets at 600mm centres so that both bottom faces are flush (refer to Figure 1 on page two). Slide the 300mm length Superdek® sheets into the header flashing and fix through to the header beam and top girt using coloured 10x16mm self tapping screws in every pan (Figure 1).



INSTALLATION

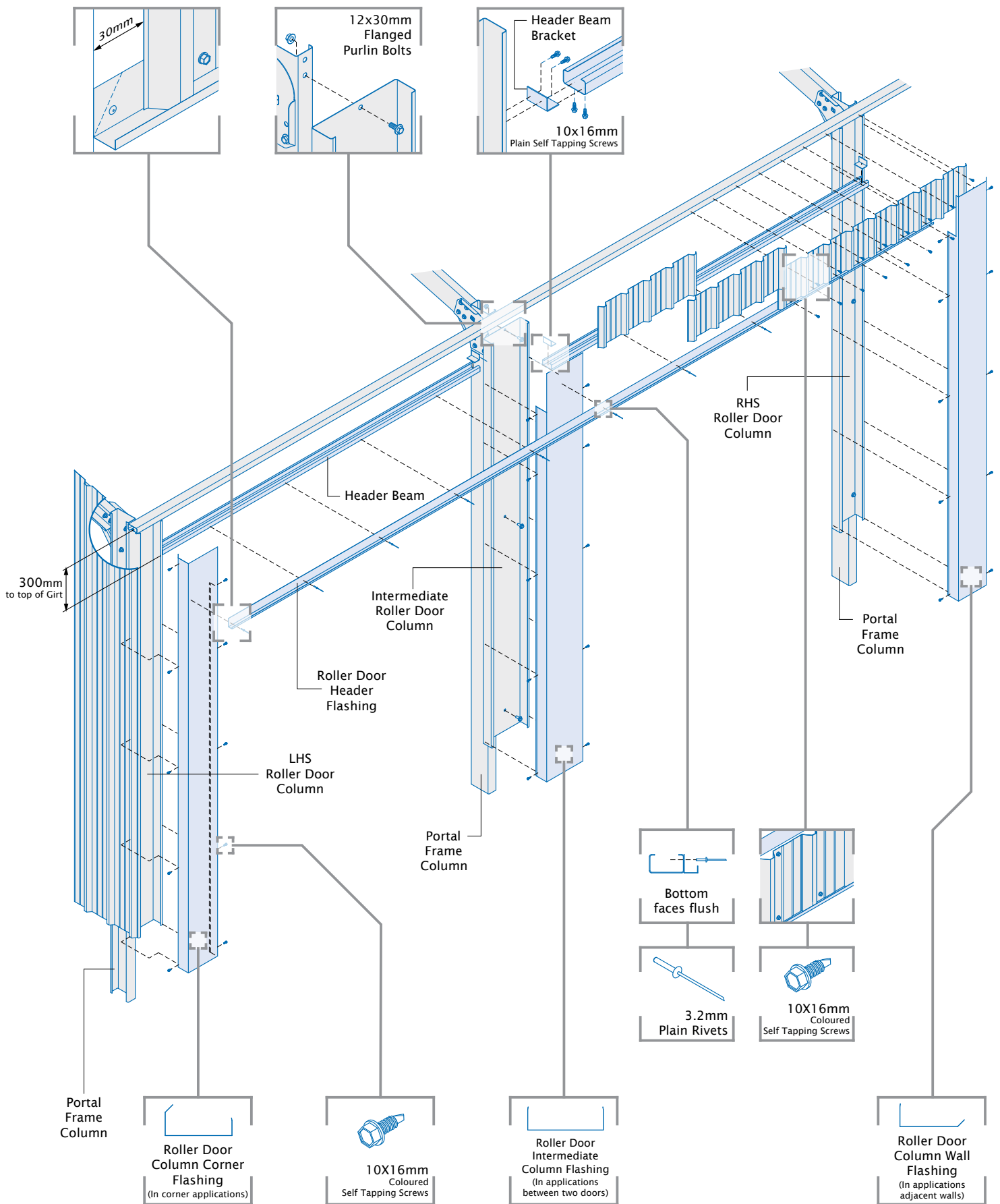
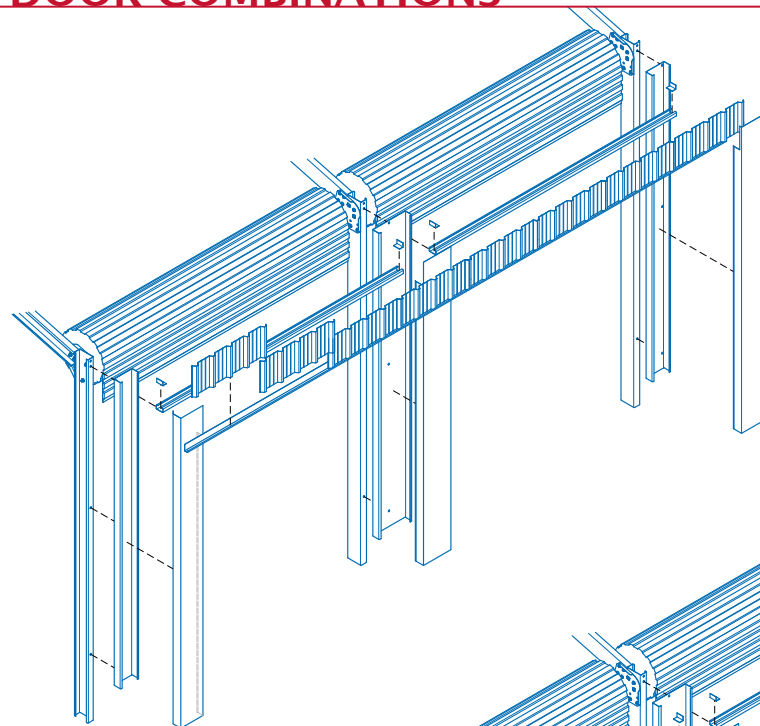


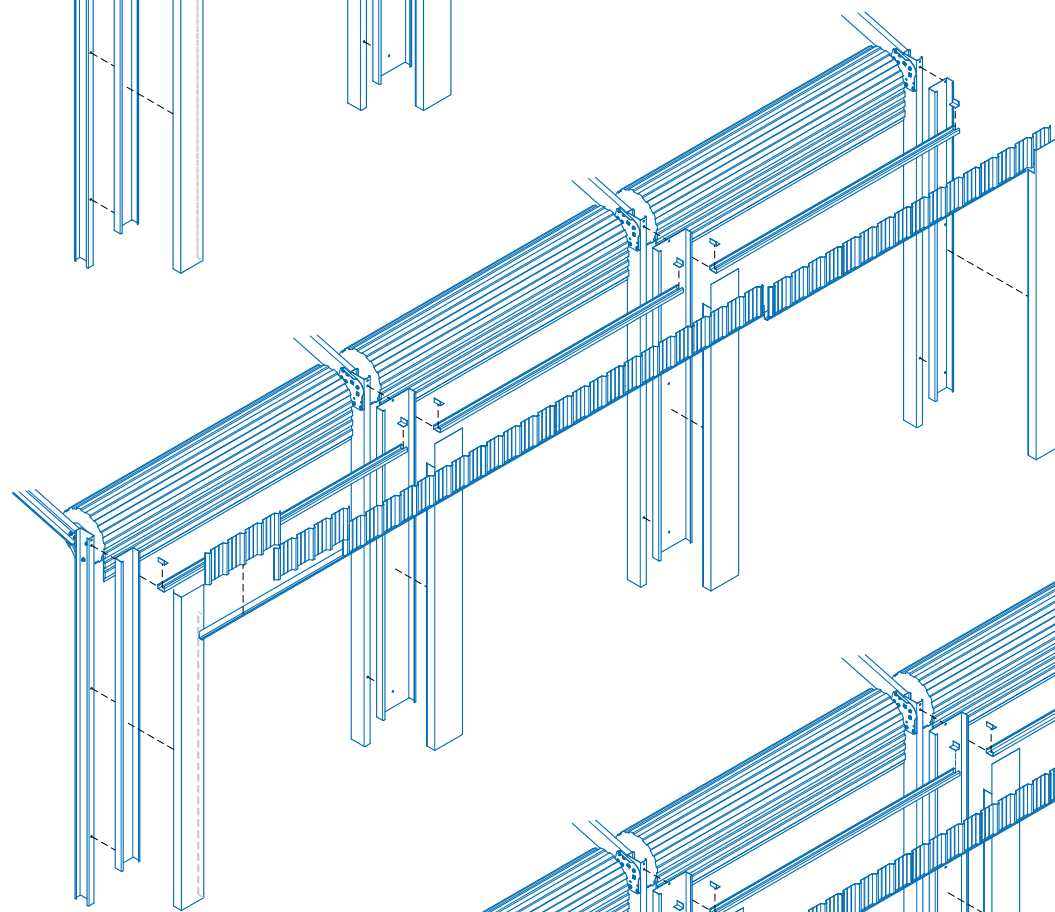
Figure 1

DOOR COMBINATIONS



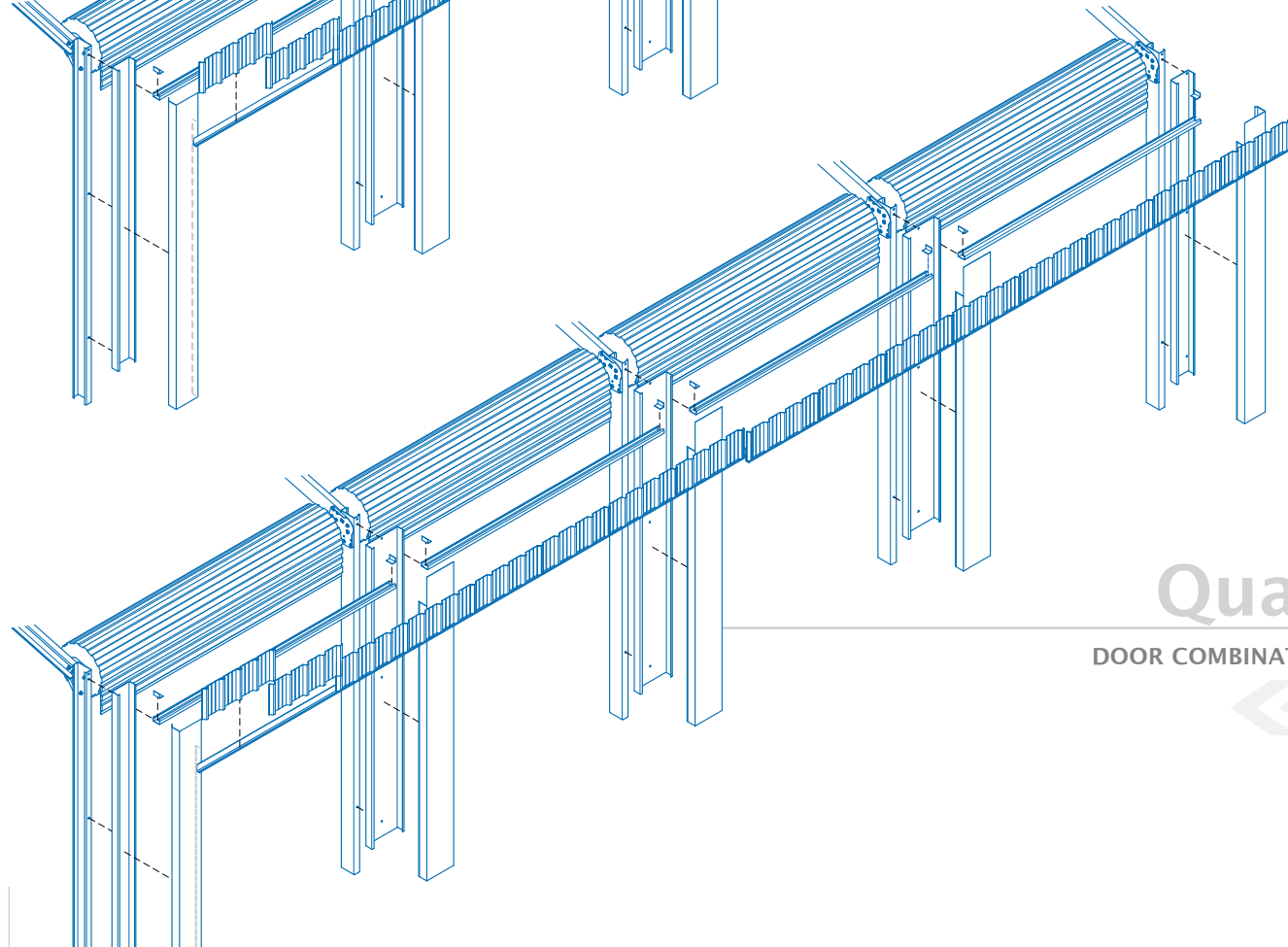
Double

DOOR COMBINATION



Triple

DOOR COMBINATION



Quad

DOOR COMBINATION



Figure 2



FILLER GIRT CONNECTIONS

CONTACT

1300 165 165

1 Roller Door Columns

Attach the filler girt to the side roller door column using a girt bracket and two plain 10x16mm self tapping screws in each flange.

2 End Portal Frame Column

In applications where the filler girt stops short of the end portal frame column, use a girt connector bracket and two 12x30mm flanged purlin bolts.

3 Joining Three and Six Metre Filler Girts

Use a girt connector bracket to join filler girts at a portal frame column. Use a 12x30mm flanged purlin bolt in each hole of the bracket. This application occurs when roller doors are installed in the end bays of 12m long sheds. These connections should only occur at centre portal columns.

4 Where a Girt Crosses a Portal Frame Column

In applications where the Girt crosses a portal frame column, use a 12x30mm flanged purlin bolt to secure it.

